

# WINDMILL *Manor*

THE PLACE TO  
CALL HOME



[www.kironprop.co.za](http://www.kironprop.co.za)

# WINDMILL *X31*

## HELLO *home*

VIBRANT FAMILY LIVING

Now Selling from R650 000

**Affordable modern family homes built perfectly for contemporary living. Located in Boksburg, Windmill Manor offers quick accessibility to major road networks and highways. This stylish development is within close proximity to schools, entertainment & shopping centres as well as business districts.**

**BRAND NEW**

2 & 3 Bedroom  
Houses



## The Perfect Family Neighbourhood for young couples, newly-weds and the family looking to buy their first home.

Windmill Manor offers the emerging young professional and urban families a comfortable and relaxed lifestyle in a prime and convenient location.

The stylish, contemporary home is designed around family and features open-plan living that opens out to a private and cosy outdoor space.

In addition, residents can enjoy the luxury of living in a desirable location that suits their families to be in a neighbourhood renowned for convenience and centrality, in a brand new home at an affordable price.





# Location, Location, Location!

Located in Windmill Park, Boksburg, this vibrant community has family at heart.

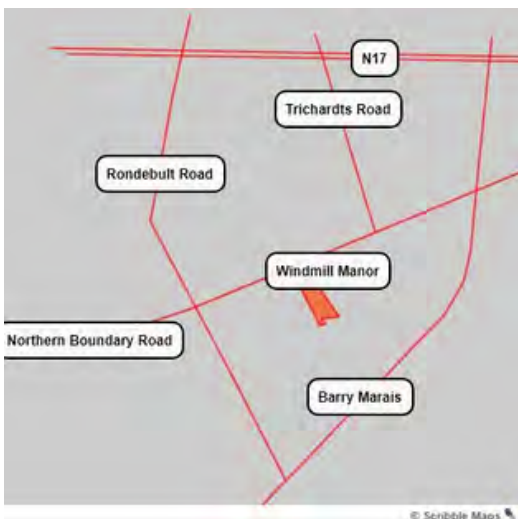
The conveniently-situated development, with North Boundary Road just on the northern border, located between Rondebult Road and Trichardt's Road.

Windmill Manor is being developed over a rollout of stages. The completion of the project will consist of freestanding urban homes for sale to the open market.

This vibrant neighbourhood is made-up of close-knit families like yours, making it the perfect community to call home.



**Auret Street, Windmill Park,  
Boksburg**



## close proximity to

- Your children's school
- Your next visit to the clinic
- Your daily fitness session
- Restaurants and family entertainment centers
- Sunward Lifestyle Center
- Mall@Carnival
- Carnival City
- Major Motorways (N17, N3)

# Windmill Manor

## key features

- Brand new, free-standing housing complex
- 2- & 3- bedroom units
- Modern and contemporary design
- Private yard
- Relaxed open-plan living
- Limited entrances
- Convenient access to major road networks



## The Heart of a Kiron Home is Family & Quality

Kiron is once again reinventing local urban living and redefining the concept of affordable luxury. Kiron has mastered the art of bringing quality to contemporary design, and are proud to present this collectively vibrant community to the East Rand, based in Windmill Park, Boksburg.

As developers of affordable housing, Kiron has earned a reputation for building modern, spacious and quality family homes in vibrant communities. Developed for the emerging middle-class South African, Windmill Manor is a coming together of contemporary, experience and excellence. This is the result of understanding of what a perfect home is for urban-dwelling South Africans.

# A Better Lifestyle at a Price You Can Afford

Windmill Manor is perfectly situated on the East Rand. The development boasts of a convenient and central location with easy access to transport networks & connections.

Living at Windmill Manor saves you time for things that really matter. The location boasts of quick access to major surrounding towns such as Boksburg, Alberton, Germiston and Johannesburg CBD. It is also nearby Springs, Kempton Park, Brakpan, Benoni, Heidelberg.



**WORK** Windmill Manor is 10 km from the CBD in Boksburg. Germiston CBD only 15km away whilst Johannesburg CBD is a close 28km. With Alberton nearby, your trip to the CBD is 18km with Alrode only 15km. Wadeville is also within reach with a journey of only 9km.

O.R Tambo International Airport is easily accessible at 22km. The main roads provide easy access to major motorways, including the N17 and N3.



**SCHOOL** Every great neighbourhood needs excellent schools which offers quality education nearby enough to enhance your family's daily living experience.

Getting your kids to school will be safe and quick, with many great schools nearby.



**MEDICAL CARE** Your family's health and well-being is important as access to good medical care is vital.

Sunward Park Netcare and Tambo Memorial Hospital are within quick access to Windmill Manor.



**SHOPPING** A wide choice all around, Windmill Manor is near to many convenient shopping retail complexes. Several shopping centers, malls and entertainment complexes are within easy access and a short drive. Sought-after family-friendly entertainment such as Carnival City, Sunward Park Lifestyle Center, East Rand Mall, Mall @Carnival will be just a quick trip away.

The hours saved gives you that extra special time to be with your family and make memories.

# Windmill Manor

## Exterior Views

All homes are finished with tiled Gable roofs. Alternatively modernise the look to a tiled Tuscan Roof Style for an extra R10 000.

### 2 Bedroom Units (45m<sup>2</sup> and 50m<sup>2</sup>)



45m<sup>2</sup> Gable



45m<sup>2</sup> Tuscan



50m<sup>2</sup> Gable



50m<sup>2</sup> Tuscan

## 3 Bedroom Units (55m<sup>2</sup>, 58m<sup>2</sup> and 63m<sup>2</sup>)



55m<sup>2</sup> Gable



55m<sup>2</sup> Tuscan



58m<sup>2</sup> Gable



58m<sup>2</sup> Tuscan



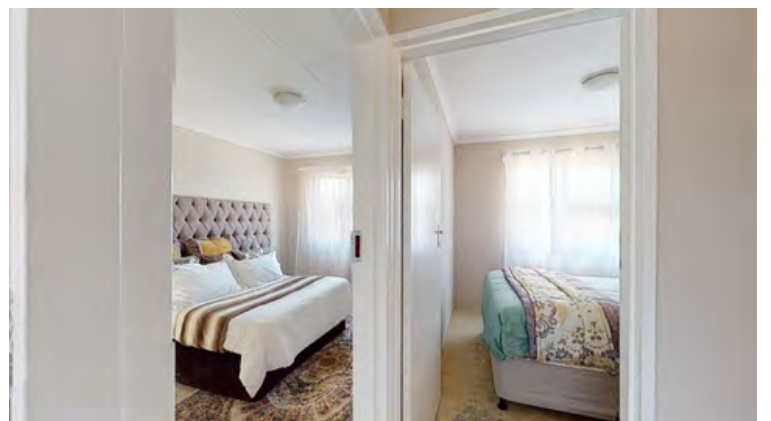
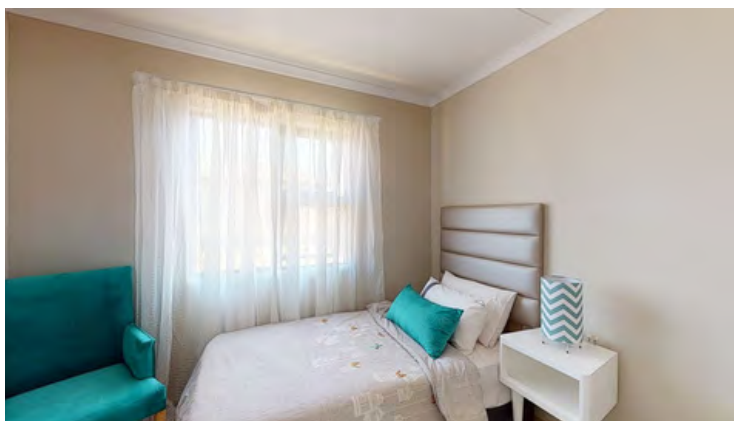
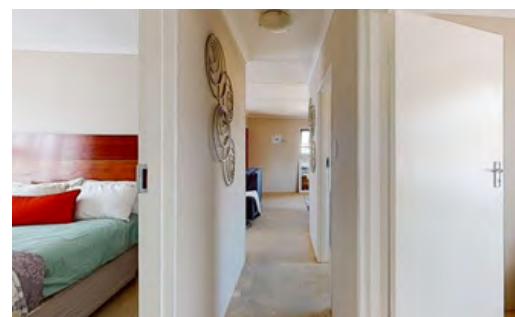
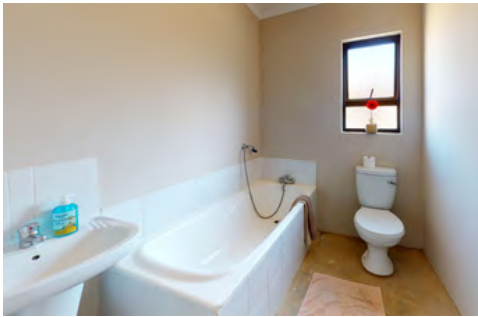
63m<sup>2</sup> Gable



63m<sup>2</sup> Tuscan



# Interior Views



# Unit Types

Type 1 (45m<sup>2</sup>)

R650 000 (R 6 952 pm)\*

## LEGEND

Bedrooms	2
Bathrooms	1
Open Plan Living	1
Area Private Garden	1
<hr/>	
House	45m <sup>2</sup>
Area Stand	100-
Size	150m <sup>2</sup>

Upgrade from standard gable to Tuscan Finish for R10 000.

A modern cosy family home with open-plan living and spacious private garden. It is perfect for families, first-time buyers or as an investment.

\*T&C's Apply



# Unit Types

Type 2 (50m<sup>2</sup>)

R680 000 (R 7 267pm)\*

## LEGEND

Bedrooms	2
Bathrooms	1
Open Plan Living	1
Area Private Garden	1
<hr/>	
House	50 m <sup>2</sup>
Area Stand	100-
Size	150m <sup>2</sup>

Upgrade from standard gable to Tuscan Finish for R10 000.

A modern cosy family home with open-plan living and spacious private garden. It is perfect for families, first-time buyers or as an investment.

\*T&C's Apply



# Unit Types

Type 3 (55 m<sup>2</sup>)

R710 000 (R7 582pm)\*

## LEGEND

Bedrooms	3
Bathrooms	1
Open Plan Living	1
Area Private Garden	1
<hr/>	
House	55 m <sup>2</sup>
Area Stand	100-
Size	150m <sup>2</sup>

Upgrade from standard gable to Tuscan Finish for R10 000.

A modern cosy family home with open-plan living and spacious private garden. It is perfect for families, first-time buyers or as an investment.

\*T&C's Apply



# Unit Types

Type 4 (58 m<sup>2</sup>)

R745 000 (R7 949pm)\*

## LEGEND

Bedrooms	3
Bathrooms	2
Open Plan Living	1
Area Private Garden	1

House	55 m <sup>2</sup>
Area Stand	100-
Size	150m <sup>2</sup>

Upgrade from standard gable to Tuscan Finish for R10 000.

A modern and comfortable family home with open-plan living and spacious private garden. It is perfect for families, first-time buyers or as an investment.

\*T&C's Apply



# Unit Types

Type 5 (63 m<sup>2</sup>)

R785 000 (R8 369pm)\*

## LEGEND

Bedrooms	3
Bathrooms	2
Open Plan Living	1
Area Private Garden	1

House	63 m <sup>2</sup>
Area Stand	100-
Size	150m <sup>2</sup>

**Upgrade from standard gable to Tuscan Finish for R10 000.**

This luscious house boasts as a modern and comfortable family home with open-plan living and a spacious private garden. It is perfect for families of all kinds.

\*T&C's Apply



# WINDMILL *Manor*

**Located:**



Windmill Manor, nestled in Windmill Park, Boksburg introduces a chic development conveniently located near schools, shopping centers, and entertainment venues.

**From :**

**R650 000**

**Call Us :**



079 451 1243



[www.kironprop.co.za](http://www.kironprop.co.za)

**kiron**